

TX-500 Input Level Setup for Digital Modes

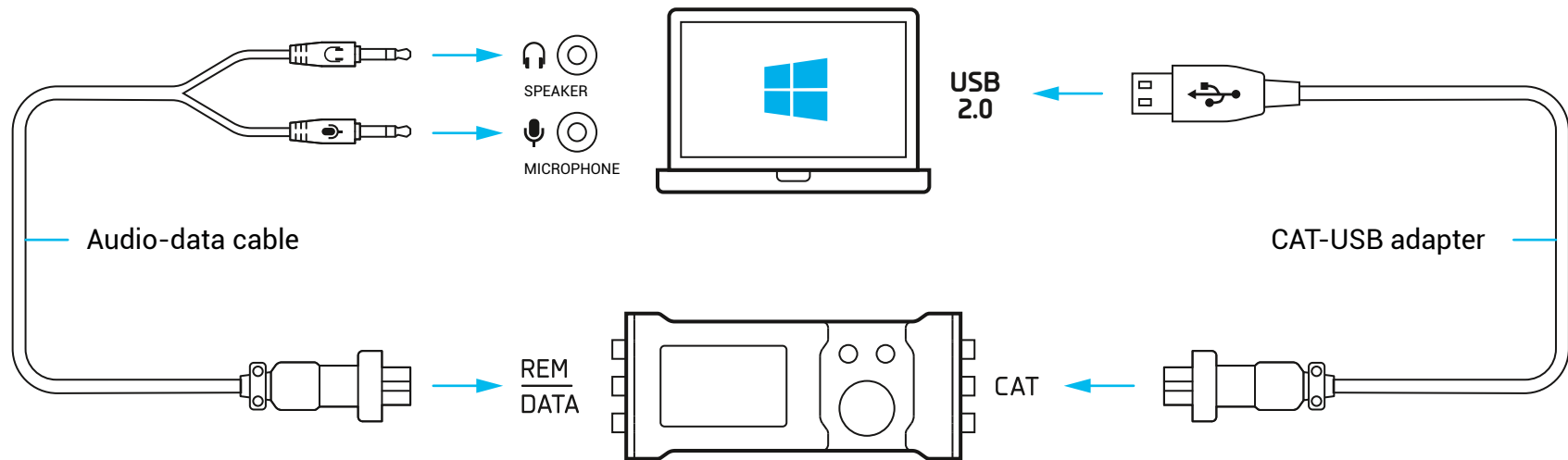
on the example of the WSJT-X program

VERSION 1.0

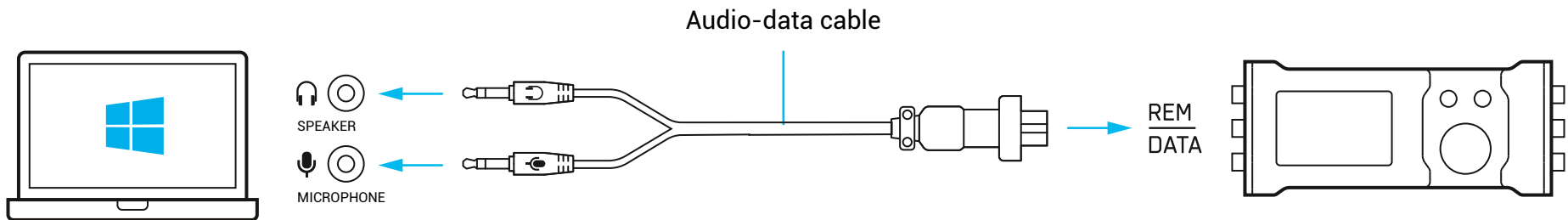
1. Connecting the TX-500 to a PC

There are options for connecting the TX-500 transceiver with control over the CAT interface or via VOX

a. Connection with CAT interface control



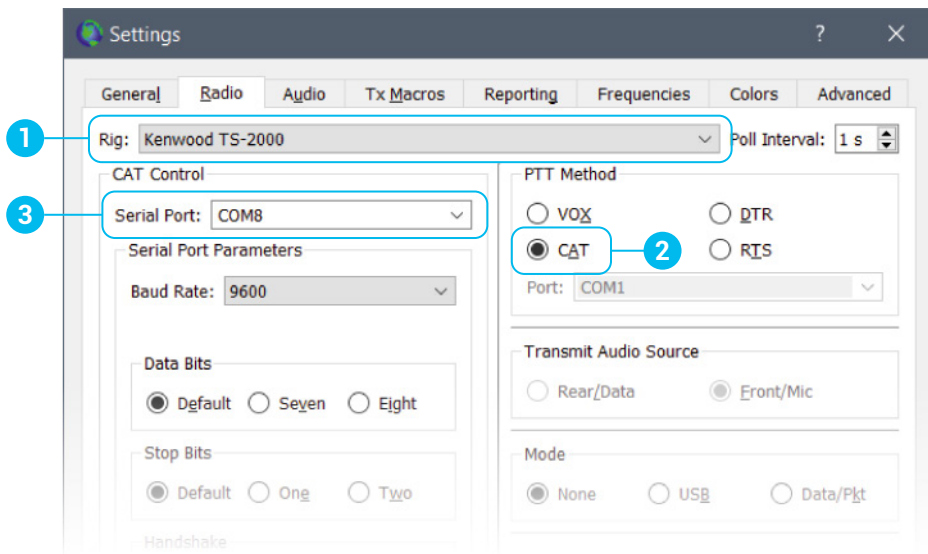
b. Connecting with VOX control



2. Setting up the WSJT-X program

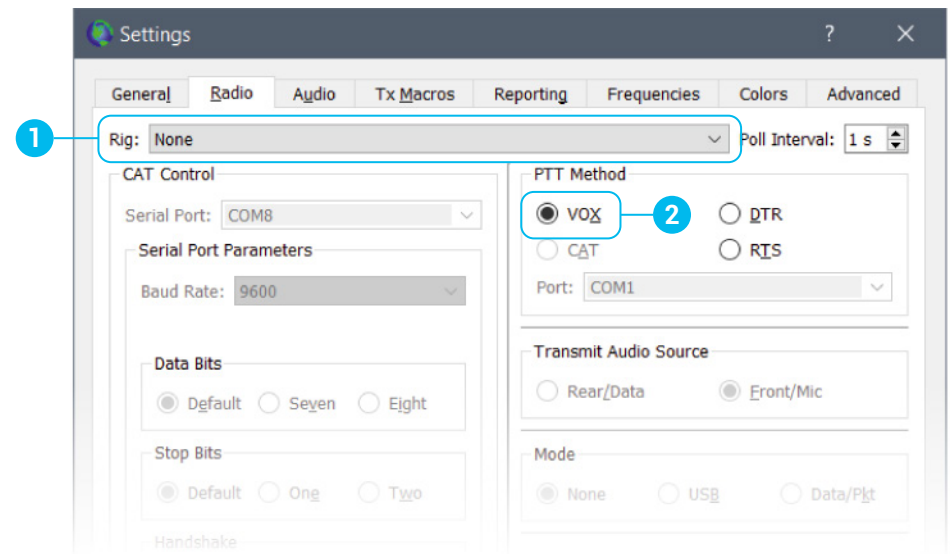
2.1. Go to File > Settings, Radio tab

a. CAT interface control:



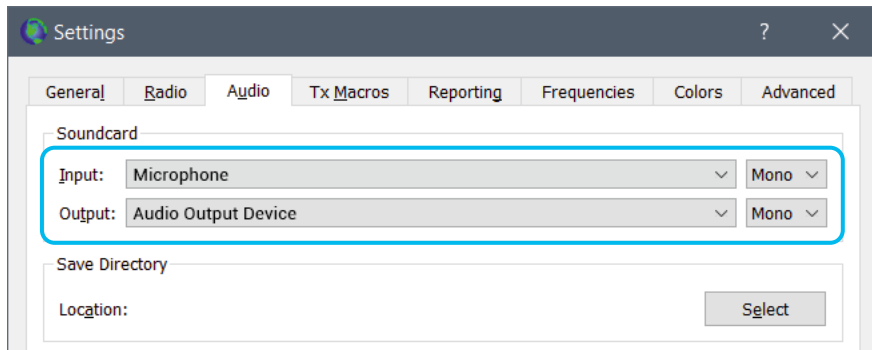
- 1 Select Rig: Kenwood TS-2000
- 2 Select the PTT control method: CAT
- 3 Select the COM port number to which the transceiver is connected

b. VOX control:

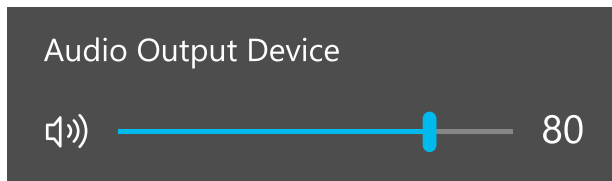


- 1 Select Rig: None
- 2 Select the PTT control method: VOX

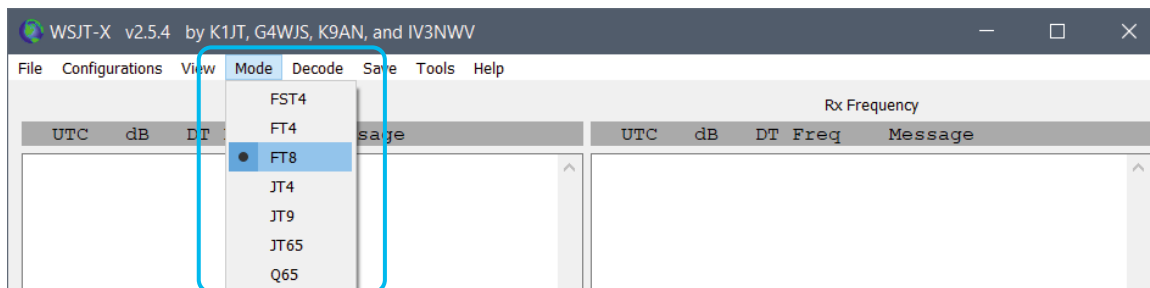
2.2. Go to File > Settings, Audio tab and select audio input and output devices



2.3. In the operating system volume mixer, set the audio output level from 50 to 90%



2.4. In the main window of the WSJT-X program, in the Mode tab, select FT8



3. Setting up the TX-500 transceiver

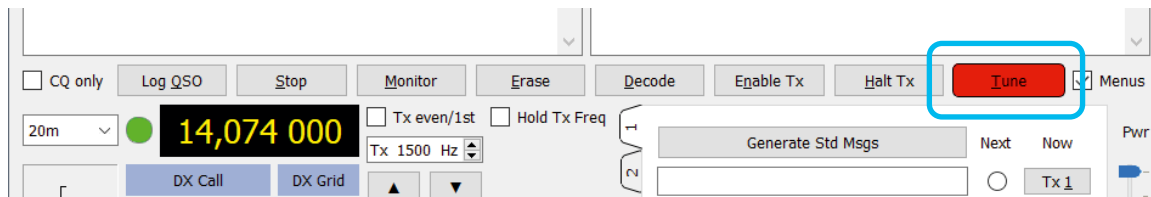
3.1. In the TX-500 settings menu change the level indication type to MIC

22. TX METR: MIC

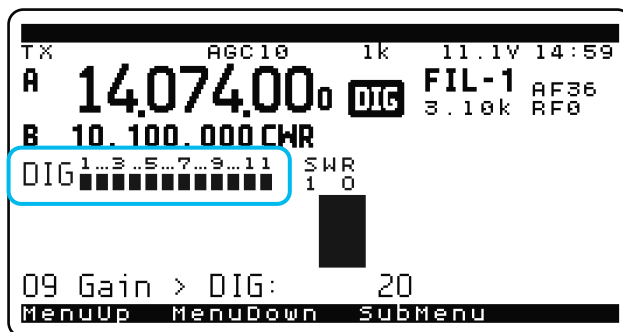
3.2. Set the initial value of the level DIG = 20

09. GAIN > DIG: 20 (MIC/DIG mode switched by SubMenu key)

3.3. Turn on TUNE in the main window of WSJT-X



3.4. Adjust the DIG value until all cells on the indicator scale are completely filled



! If, during the setup, the DIG level approaches the maximum, but the indicator scale is not filled, increase the audio output level on the PC (see paragraph 2.3)